



THE
GRAND
RESIDENCES



5801 Nicholson Ln, North Bethesda • 866-303-5279 • www.TheGrandNorthBethesda.com

THE GRAND

More space.
More amenities.
One address.

96,000 SF of amenities and residences up to 1,920 SF, set on private gated grounds off the road. An indoor-outdoor pool, a sauna, a Grand Ballroom, and floor plans with enough space to actually spread out. A standard of living that's simply difficult to find anywhere else in North Bethesda. There's only one Grand.

THE
GRAND
RESIDENCES
ORIO



AMENITIES

96,000 SF of amenities

From an indoor-outdoor pool and private grounds to a sauna, garage parking, and gated access, The Grand offers more amenity space than any comparable address in North Bethesda.

FEATURED AMENITIES

- Indoor & outdoor pools
- Private grounds
- Sauna & steam room
- Grand Ballroom
- Garage parking
- Pet-friendly

OTHER AMENITIES

Fitness & cardio center • Yoga studio
• Billiards & game room • Children's activity room • Playground • Tennis court • Grand Club suite with catering kitchen • Courtyard grilling stations • Library lounge • Work lounge • Theater room • Free visitor parking • Beautifully landscaped walking paths • Personal training available • WiFi in amenity spaces • Smoke-free community

THE
GRAND
RESIDENCES
ORIO



RESIDENCES

More space than you'd expect.

Generous square footage, floor-to-ceiling windows, and private balconies set The Grand apart from every other address in North Bethesda.

- 1, 2 & 3-bedroom residences
- Natural light and open layouts
- Private balconies and patios
- In-residence washer & dryer
- Panoramic views

UNIT SELECTION

1 bed | 1 bath — 700 - 910 SF

1 bed with den | 1.5 bath — 925 SF

2 bed | 1 bath — 925 - 1,160 SF

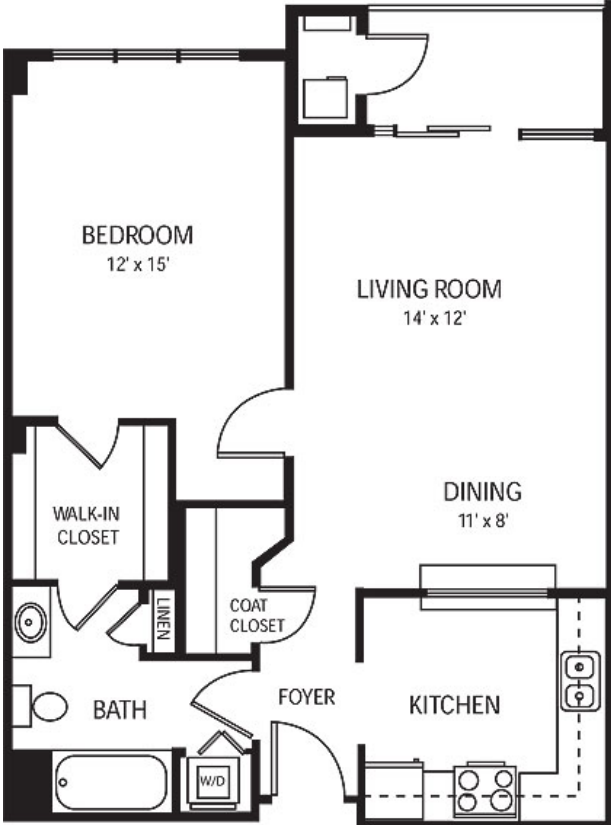
2 bed | 2 bath — 1,220 - 1,520 SF

3 bed | 2.5 bath — 1,920 SF

THE
GRAND
RESIDENCES
ORLANDO

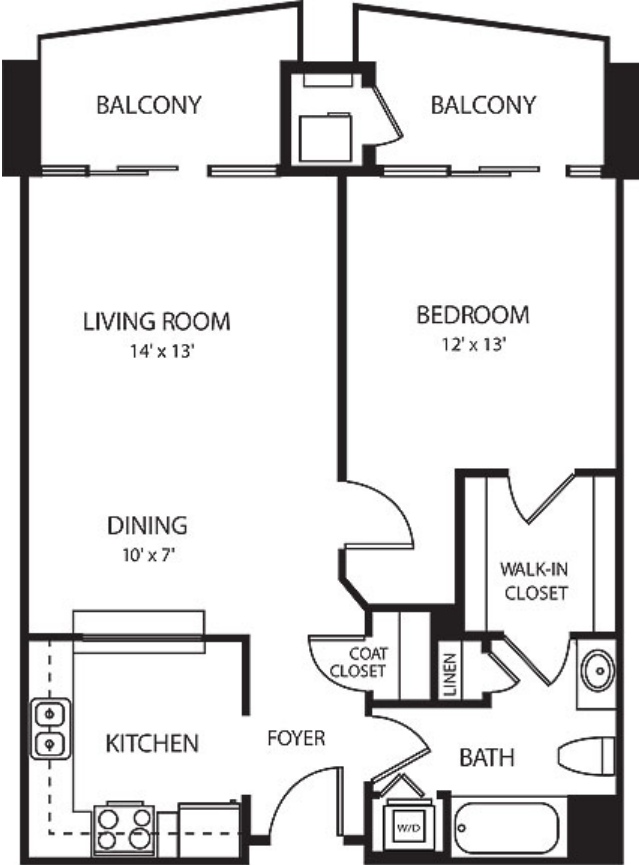


SELECT RESIDENCES



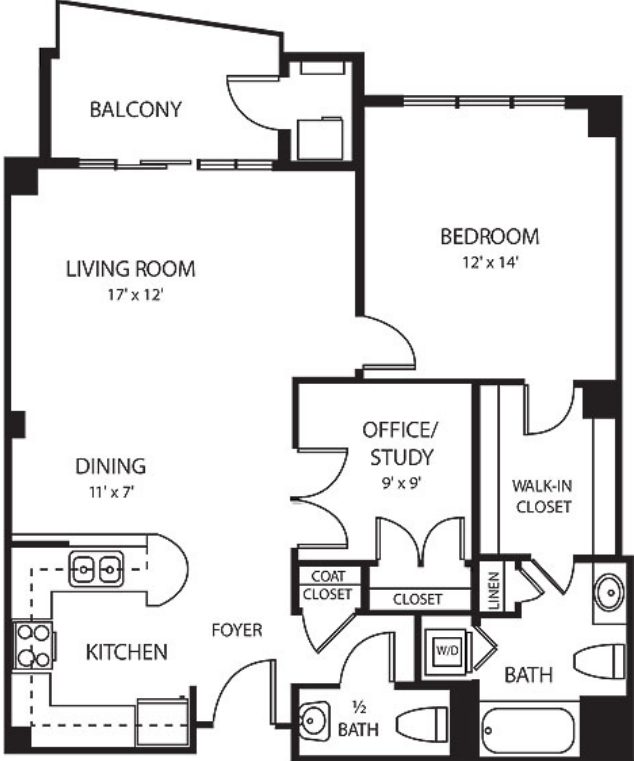
All dimensions are approximate.

BACH
1 Bed • 1 Bath
950 SF



All dimensions are approximate.

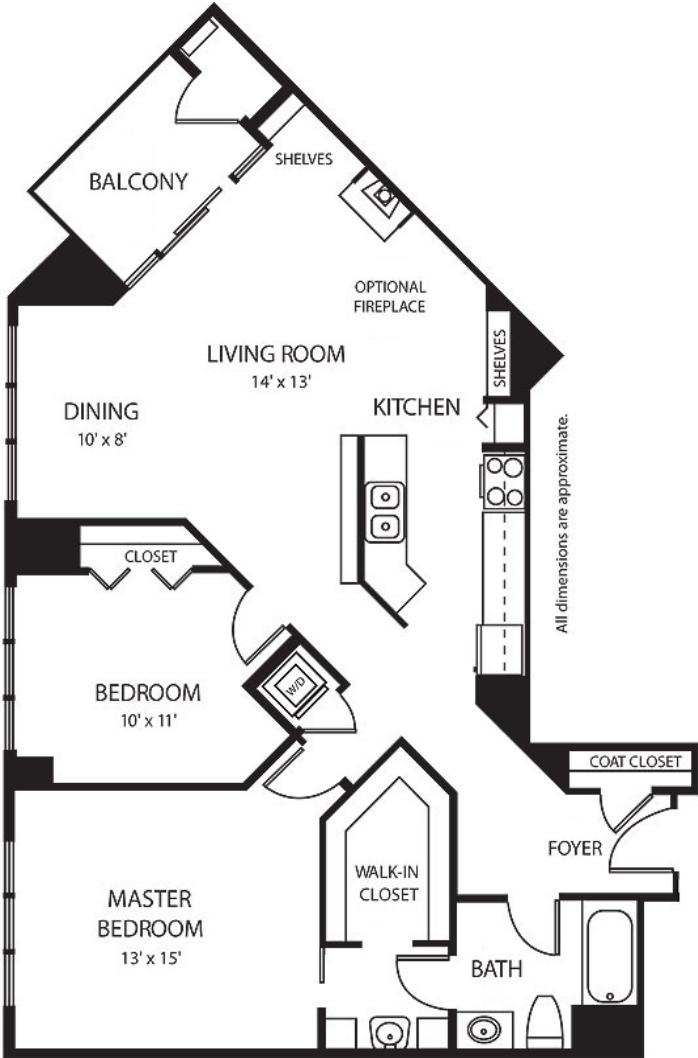
WAGNER
1 Bed • 1 Bath
1,100 SF



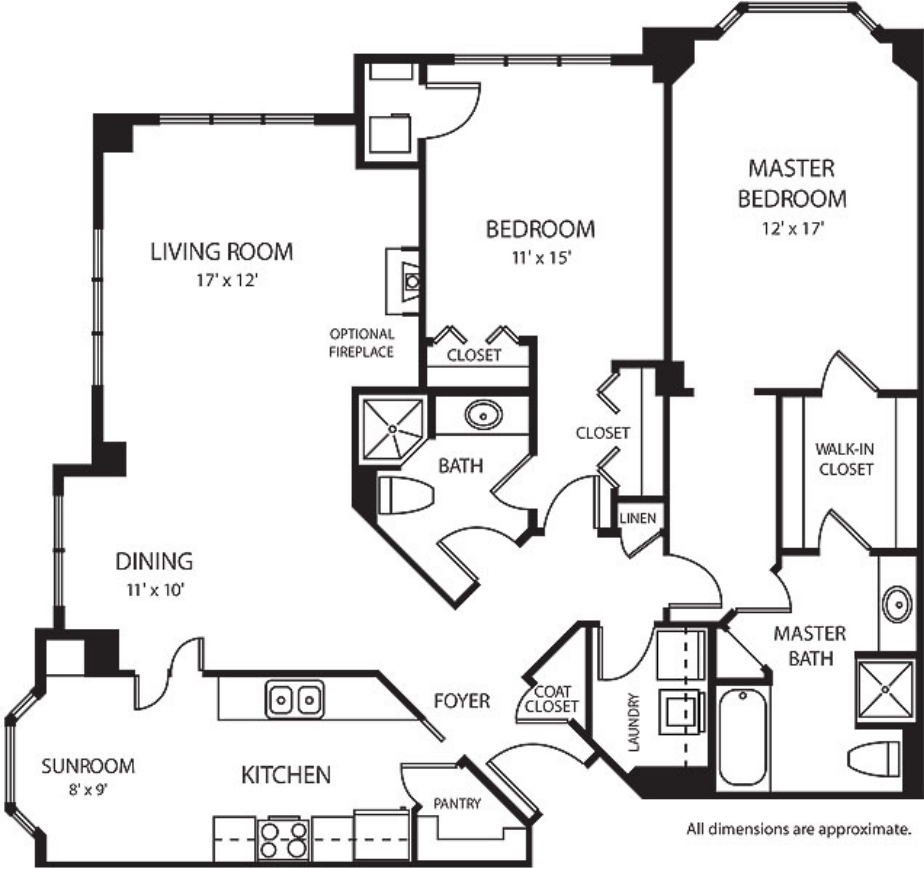
All dimensions are approximate.

HANDEL
1 Bed • 1.5 Bath
1,000 SF

SELECT RESIDENCES



CHOPIN
2 Bed • 1 Bath
1,150 SF



BEETHOVEN
2 Bed • 2 Bath
1,400 SF

LOCATION

Everything within reach.

The Grand is one of North Bethesda's most walkable addresses, with Whole Foods, the Metro, and a full neighborhood of dining and retail just outside your door.

NEARBY

Whole Foods	0.2 miles
North Beth Metro	0.3 miles
Pike & Rose	0.4 miles
REI	0.5 miles
The Strathmore	1.3 miles
NIH	3.8 miles
Downtown Bethesda	5 miles


AT PIKE & ROSE

Julii • Hello Betty • Melina • bartaco
• Summer House • Fogo de Chão •
Pinstripes • Hawkers • sweetgreen
• &pizza • REI • West Elm • Uniqlo •
Sur La Table • Sephora • L.L.Bean
• Warby Parker • iPic Theaters •
JOOLA • sweathouz • maman •
CoffeeFi • French Press

THE
GRAND
RESIDENCES
ORLO



THE
GRAND
RESIDENCES

MANAGED BY  ORLO

SCHEDULE YOUR PRIVATE TOUR

866-303-5279

www.TheGrandNorthBethesda.com

5801 Nicholson Ln, North Bethesda