

PENTHOUSES AT

THE

GRAND

RESIDENCES



ORLO

5801 Nicholson Ln, North Bethesda • 866-303-5279 • TheGrandNorthBethesda.com

PENTHOUSES

THE GRAND'S FINEST RESIDENCES



PENTHOUSES

CEILING HEIGHTS

- Soaring two-story volume
- 9.5-foot ceilings in the primary suite

WINDOWS & VIEWS

- 17-foot-wide window wall, over 10 - feet high
- Two-story loft window wall with panoramic treetop and skyline views

TERRACES

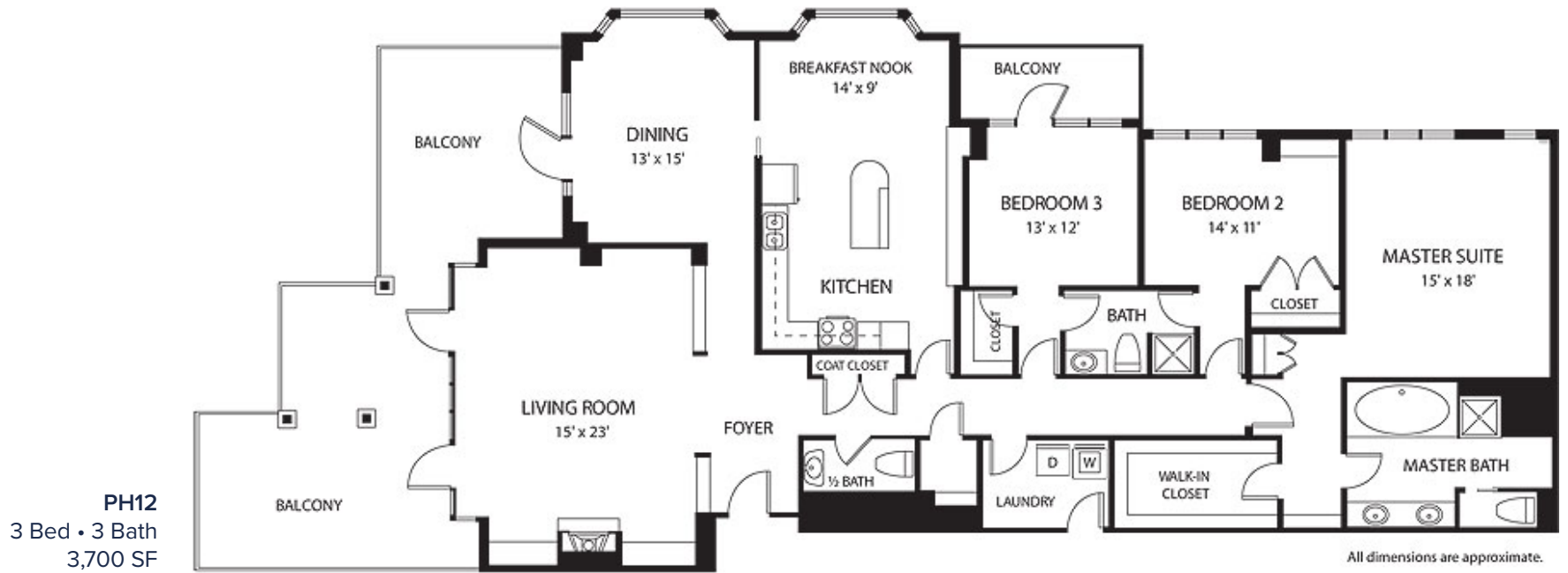
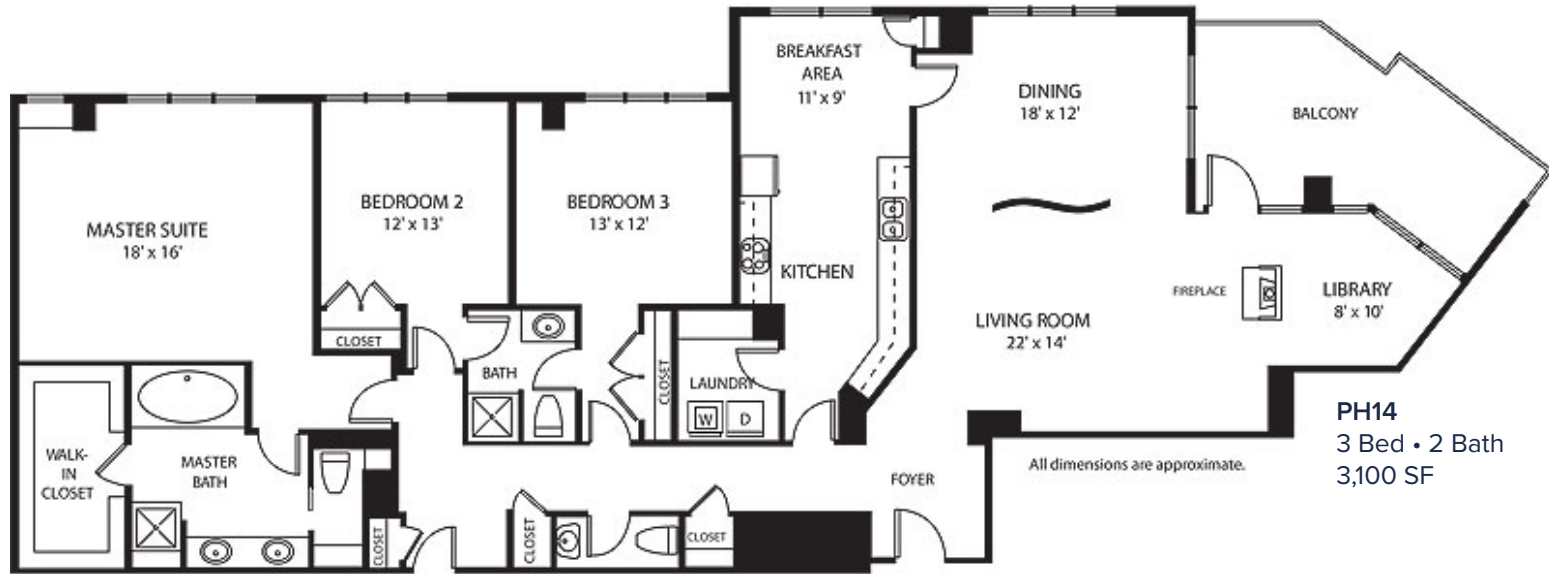
- Private terrace off the living and dining areas
- Private primary suite terrace

ARCHITECTURAL & LOFT

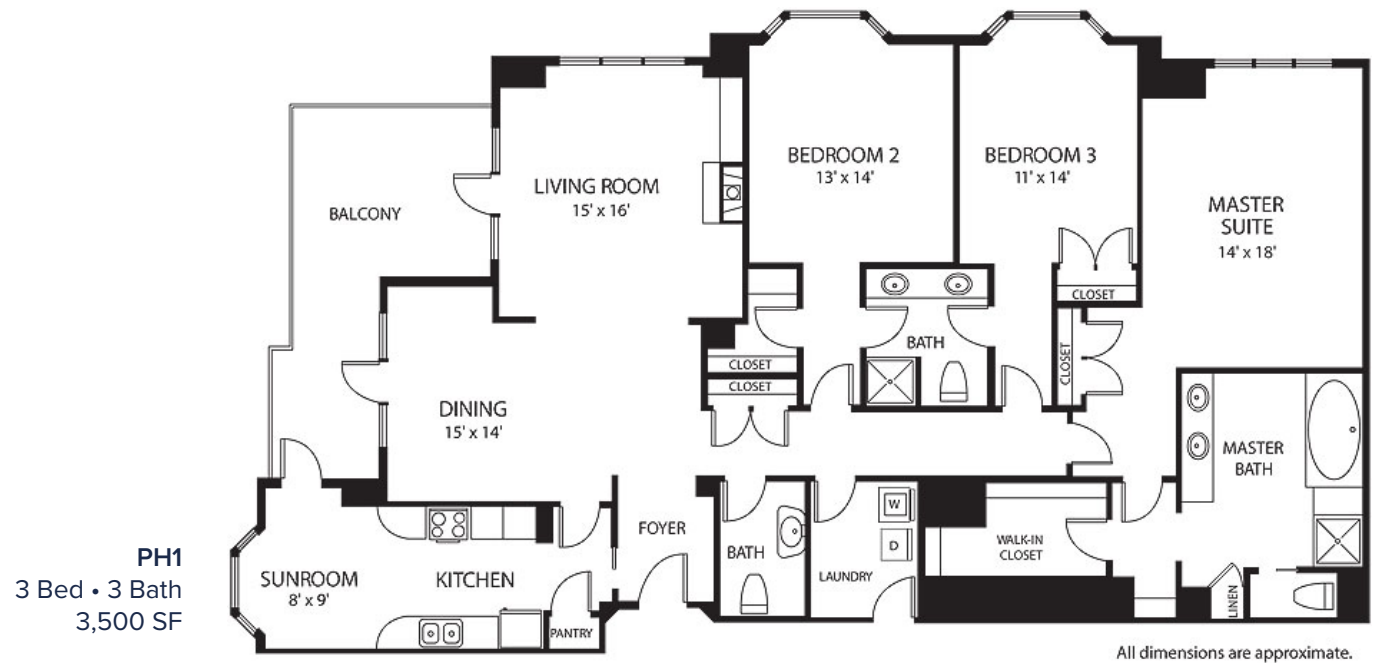
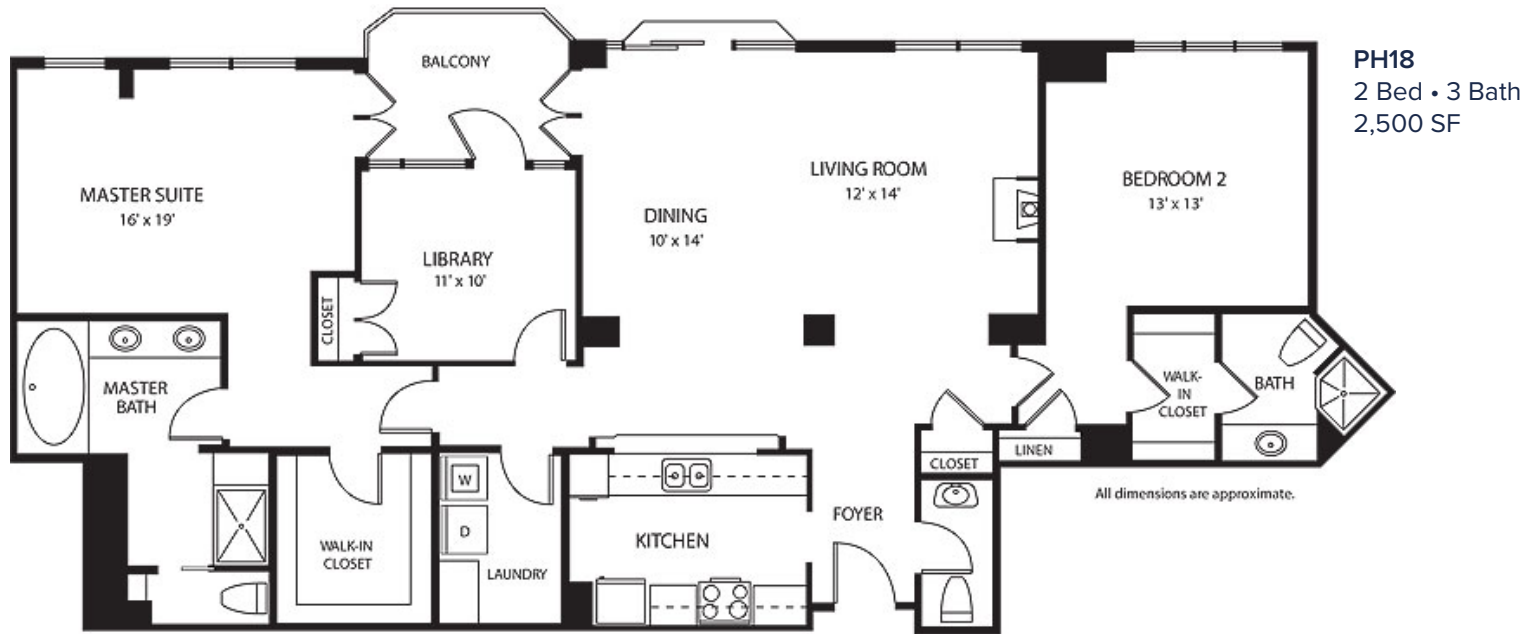
- 20-foot staircase to the loft level
- Custom architectural columns
- Loft dens overlooking the two-story window wall
- Quiet rooftop-facing exposure



SELECT RESIDENCES



SELECT RESIDENCES





THE
GRAND
RESIDENCES

MANAGED BY  ORLO

SCHEDULE YOUR PRIVATE TOUR

866-303-5279

www.TheGrandNorthBethesda.com

5801 Nicholson Ln, North Bethesda